



# DÜZGİT GROUP DS HARMONY LTD



## M/T "DÜZGİT HARMONY" 3150 DWT

### IMO II CHEMICAL / OIL TANKER

#### Vessel Particulars

Classification	BV – IMO II, AVM - DPS
Built	2009
Builder or Shipyard	Düzgıt
Flag	Malta
Port of Registry	Valletta
IMO Nr. / Call Sign	9445370 - 9HA2068
Speed	12.5 Knots
Economic Speed	11.0 Knots
Cons. (1) (%85 MCR)	9.50 t/day ifo 180cst
Cons. (2)	7.00 t/day ifo 180cst
Hose Crane Capacity	SWL 5 mt at 13 mts
Main Engine	2 x ABC 6MDZC/1000 kW
Main Generators	3 x LINDENBERG 325 kWe 1800 RPM
Emergency Generators	1 x LINDENBERG 99 kWe 1800 RPM
Propulsion System	2 x SRP 1012 FP Schöttel Rudderpropeller
Bow Thruster	300 kW Schöttel STT 170 FP Electrical Driven
Cargo Pumps	10 x 200 cbm/h Elec-Driven Deepwell Pumps 2 x 50 cbm/h Elec-Driven Deepwell Pumps 1 x 70 cbm/h Hyd-Driven Portable Pump
Total loading cap.	1100 cbm/h
Discharging cap.	800 cbm/h
Sternline	YES DN 250
Boilers	2 x 800 kW Ther Oil HTI-GESAB 1 x 500 kW Economiser
Steam generator	1 x 500 kg/h
Nitrogen Plant	1 x 500 cbm/h

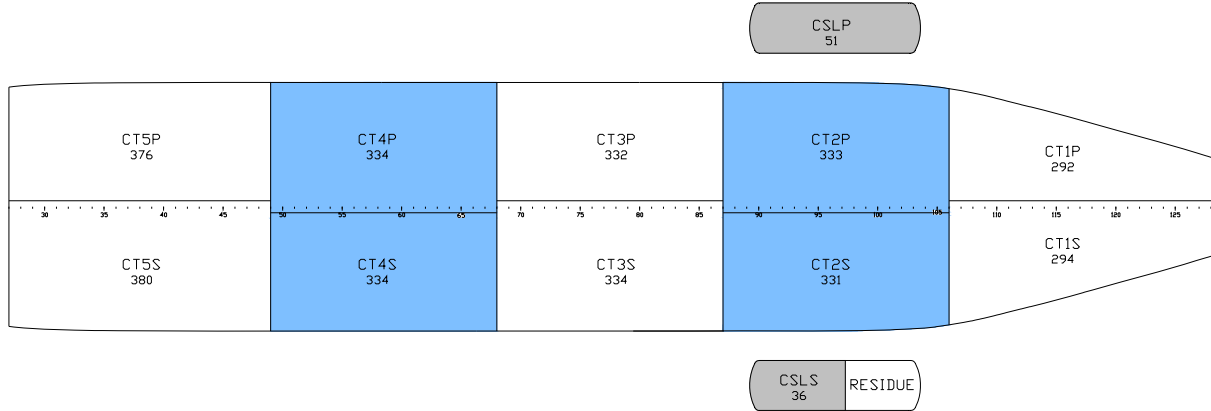
#### Main Dimensions

Deadweight	3,147 mts
Lightweight	1,429 mts
Length (OA)	89.74 m
Length (BP)	84.11 m
Breadth	12.50 m
Draught (SW)	5.13 m
Air draft (with folded masts)	15,0 mts
Ballast Capacity	1,358 m <sup>3</sup>
Cargo Capacity inc. Slops	3428 m <sup>3</sup>
Cargo Capacity (at 98%)	3341 m <sup>3</sup>
Gross Tonnage	2166
Net Tonnage	949
Integrated cargo tanks	10 cargo
Deck cargo tanks	2 slop
Segregations for cargo lines	5 (CT) + 1(SP)

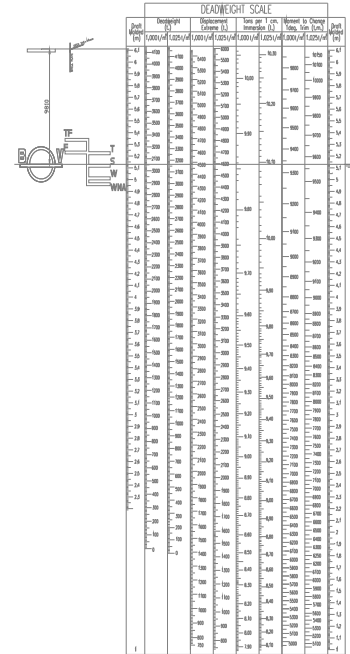
**Owner** DS Harmony Ltd (Malta)  
**Deliveries** July - 2009

# M/T "DÜZGİT HARMONY"

ALL VOLUMES ARE GIVEN IN M<sup>3</sup> AT 98%



Cargo Tanks						
Tank no	m3 98%	Lining	Pump Capacity	Max SG	IMO	Max Heat Capacity
CT1P	292	Marine Line	200 m <sup>3</sup> /h	1.35	2	80 deg C
CT1S	294	Marine Line	200 m <sup>3</sup> /h	1.35	2	80 deg C
CT2P	333	Marine Line	200 m <sup>3</sup> /h	1.35	2	80 deg C
CT2S	331	Marine Line	200 m <sup>3</sup> /h	1.35	2	80 deg C
CT3P	332	Marine Line	200 m <sup>3</sup> /h	1.35	2	80 deg C
CT3S	334	Marine Line	200 m <sup>3</sup> /h	1.35	2	80 deg C
CT4P	334	Marine Line	200 m <sup>3</sup> /h	1.35	2	80 deg C
CT4S	334	Marine Line	200 m <sup>3</sup> /h	1.35	2	80 deg C
CT5P	376	Marine Line	200 m <sup>3</sup> /h	1.35	2	80 deg C
CT5S	380	Marine Line	200 m <sup>3</sup> /h	1.35	2	80 deg C
CSLP	51	Marine Line	50 m <sup>3</sup> /h	1.35	2	80 deg C
CSLS	36	Marine Line	50 m <sup>3</sup> /h	1.35	2	80 deg C
<b>Total</b>	<b>3428</b>	<b>Marine Line</b>				
RESIDUE	15	Marine Line	10 m <sup>3</sup> /h	1.54	2	80 deg C



## Manifold

Distance Bow-Center manifold	: 41.00 m
Distance Stern-Center manifold	: 48.60 m
Inboard from ships side	: 2.90 m
Height above deck	: 2.45 m
Height above waterline (loaded)	: 3.60 m
Height above waterline (in ballast)	: 5.25 m
Highest allowable pressure	: 16 bar
Manifold flanges	: 3"-6"-10" ANSI
Segregation for Cargo Lines	: 5 (CT) + 1 (SLP)

## Nitrogen

Nitrogen plant producing 500 Nm<sup>3</sup>/h

## Cargo Pumps

MarFlex electrically driven deepwell pumps in all cargo tanks. Pumping rate is each 200m<sup>3</sup>/h 110 mlc. Sp. Gravity: 1,0 Viscosity : 1,0 cst

## Cargo Rating

Total discharging rate 800 m<sup>3</sup>/h  
Total loading rate 1100 m<sup>3</sup>/h

## Cargo Heating

316L Stainless steel heating coils (Single Loop)

## Ballast System

Elec. driven centrifugal pumps  
2 x 200m<sup>3</sup>/h = 400m<sup>3</sup>/h



**DÜZGİT GROUP**

**DS HARMONY LTD**

DS VENTURE LTD. c/o DÜZGİT GROUP  
Aydintepe Mahallesi, Yakut Sok. No: 11  
Tuzla 34947 İstanbul - TURKEY

Phone : +90 216 4936064

Fax : +90 216 4936066

e-mail : operations@dstankers.com

Web : [www.duzgit.com](http://www.duzgit.com)